

**PLAN NOTES:**

- ROOF TOP UNIT SUPPLIED AND INSTALLED BY MECHANICAL CONTRACTOR. PLUMBING CONTRACTOR TO ROUGH IN AND CONNECT 3/4" GAS LINE TO UNIT COMPLETE WITH PRESSURE REGULATOR, SHUT-OFF VALVE AND FLEXIBLE HOSE CONNECTION. REFER TO DETAIL MP301 FOR TYPICAL GAS LINE CONNECTION TO ROOF MOUNTED EQUIPMENT.
- RISE 1-1/2" GAS LINE (2 psi) FROM BASEMENT LEVEL UP IN WALL. EXTEND THRU ROOF AND SEAL WATER TIGHT. REFER TO SHEET P100 FOR GAS PIPING BELOW.
- RUN GAS PIPING ABOVE ROOF WITH PYRAMID TYPE SUPPORTS. REFER TO DETAIL VP301 FOR TYPICAL PIPE AND EQUIPMENT SUPPORTS.
- RUN 3/4" GAS LINE (2 psi) IN CEILING SPACE AS SHOWN. COORDINATE WITH DUCTWORK, BUILDING STRUCTURE AND OTHER PIPING.
- DROP 3/4" LINE DOWN AND CONNECT TO FIREPLACE AS RECOMMENDED BY MANUFACTURER. PROVIDE PRESSURE REGULATOR, SHUT-OFF VALVE AND FLEXIBLE HOSE FOR CONNECTION. PLACE REGULATOR AND SHUT-OFF VALVE IN ACCESSIBLE LOCATION. REFER TO DETAIL NP301 FOR TYPICAL GAS LINE CONNECTION TO APPLIANCES.
- RISE 3/4" GAS LINE (2 psi) UP IN CHASE TO ABOVE LOWER ROOF LEVEL. EXTEND THRU WALL AND SEAL PENETRATION WATER TIGHT.
- RUN WATER AND VENT PIPING IN CEILING SPACE AS SHOWN. COORDINATE PIPING WITH DUCTWORK, BUILDING STRUCTURE AND OTHER PIPING.
- EXTEND 3/4" COLD WATER (HARD) LINE THRU WALL AND RISE UP INTO JOIST SPACE OF EVENT HALL. COORDINATE PIPING WITH FOLDING DOOR SUPPORTS. LOWER ROOF STRUCTURE AND DUCTWORK.
- RISE 3/4" (HARD) COLD WATER LINE AND 1-1/4" SOFT WATER LINES UP IN WALL TO ABOVE CEILING TO RUN TO FIXTURES. REFER TO SHEET P100 FOR CONTINUATION OF PIPING BELOW.
- DROP 3/4" COLD WATER LINE (HARD) DOWN TO 4'-0" ABOVE FLOOR. PROVIDE SHUT-OFF AND DRAIN VALVE FOR EXTERNAL HOSE BIB(S) AND ROOF HOSE BIB(S). REFER TO PIPING DETAIL KP301 FOR TYPICAL PIPING CONNECTIONS. RUN DRAIN LINE TO ADJACENT SERVICE SINK. VALVE TO BE LOCATED IN ACCESSIBLE LOCATION AND LABELED AS HOSE BIB SHUT-OFF VALVE.
- REFER TO DETAIL BP301 FOR TYPICAL INSTALLATION OF RECESSED HOSE BIBB WITH VACUUM BREAKER.
- PROVIDE AND INSTALL ROOF DRAIN AND OVERFLOW DRAIN AS SPECIFIED. RUN PIPING THRU CEILING SPACE AS SHOWN. PIPING TO BE GRADED AT 1/8" PER FOOT SLOPE IN DIRECTION OF FLOW. COORDINATE PIPING WITH OTHER PIPING, DUCTWORK AND BUILDING STRUCTURE. KEEP PIPING AS HIGH AS POSSIBLE. EXPOSED PIPING TO BE PAINTED FLAT BLACK.
- DROP 6" ROOF DRAIN IN CORNER OF MECHANICAL-ELECTRICAL ROOM. REFER TO SHEET P100 FOR CONTINUATION OF PIPING BELOW FLOOR.
- DROP 6" ROOF DRAIN DOWN IN EXTERIOR WALL SYSTEM. EXTEND DOWN TO 36" MIN. BELOW GRADE. REFER TO DETAIL VP301 FOR TYPICAL INSTALLATION OF PIPING IN EXTERIOR WALL SYSTEM.
- EXTEND OVERFLOW PIPING THRU WALL AND CONNECT TO WALL FLANGE. COORDINATE WALL FLANGE WITH BUILDING TRIM AND MOUNT AS HIGH AS POSSIBLE.
- BUILDING FIRE RISER AND ALARM VALVE. REFER TO DETAIL CP302 FOR TYPICAL PIPING CONNECTIONS. ENTIRE BUILDING TO BE FIRE SPRINKLED. FIRE SPRINKLER CONTRACTOR TO COORDINATE SPRINKLER HEADS AND PIPING WITH OTHER TRADES.
- DROP 3/4" HOT WATER LINE DOWN IN WALL. REFER TO LARGE SCALE PLAN A7001 FOR CONTINUATION OF PIPING IN MECHANICAL ROOM BELOW.
- PROVIDE HOSE BIBB ABOVE ROOF AS SPECIFIED FOR EQUIPMENT WASH-DOWN. DROP 1" COLD WATER LINE DOWN THRU ROOF AND SEAL ROOF PENETRATION WATER TIGHT. SLOPE ALL HOSE BIBB PIPING IN CEILING SPACES BACK TO SHUT-OFF VALVE LOCATED IN JANITOR ROOM. SECURE 1" WATER LINE TO ROOF STRUCTURE TO MINIMIZE MOVEMENT OF PIPING. FIELD VERIFY WITH STRUCTURE IN FIELD. REFER TO DETAIL FP302 FOR TYPICAL INSTALLATION. REFER TO DETAIL FP302 FOR TYPICAL INSTALLATION.

**Myers Anderson**  
 Architecture  
 Interior Design  
 Historic Preservation

**BID SET  
 3-22-2021**

122 South Main Street • Pocatello, Idaho 83204 • Tel: (208) 233-3111 • Fax: (208) 233-3702  
 227 Appleton Street, Suite 201 • Pocatello, Idaho 83204 • Tel: (208) 233-6254



**Engineered Systems Associates**  
 1355 EAST CENTER  
 POCATELLO, IDAHO 83201  
 PHONE: (208) 233-0501  
 FAX: (208) 233-0529  
 EMAIL: esa@engsys.com  
 ESA JOB NUMBER: 18093

**PROJECT:**  
 DPW PROJECT NO. 19240  
 IDAHO STATE UNIVERSITY  
 ALUMNI & VISITOR CENTER  
 POCATELLO, IDAHO

**SHEET TITLE:**  
 PLUMBING  
 FLOOR  
 PLANS

CONTRACTOR SHALL VERIFY ALL DIMENSIONS & CONDITIONS SHOWN OR IMPLIED

DRAWING SCALE APPLIES TO 3/4" X 4" SHEET SIZE (ANSI D)

REVISION DATE

DRAWN BY:	M. JENSEN
CHECKED BY:	D. SUDWEKS
JOB NUMBER:	96548-13B
PROJECT DATE:	FEBRUARY 2021
SHEET	<b>P101</b>
	2 OF 5

**GAS SIZING CHART**

EQUIPMENT BTU LOAD	= 3,351,000
BTU-CUBIC FOOT	= 10000
TOTAL CFH (DEISGN)	= 3,500
DEVELOPED PIPE LENGTH	= 350'
DISCHARGE PRESSURE	= 2 PSI
GAS LINE SIZE	= 2"

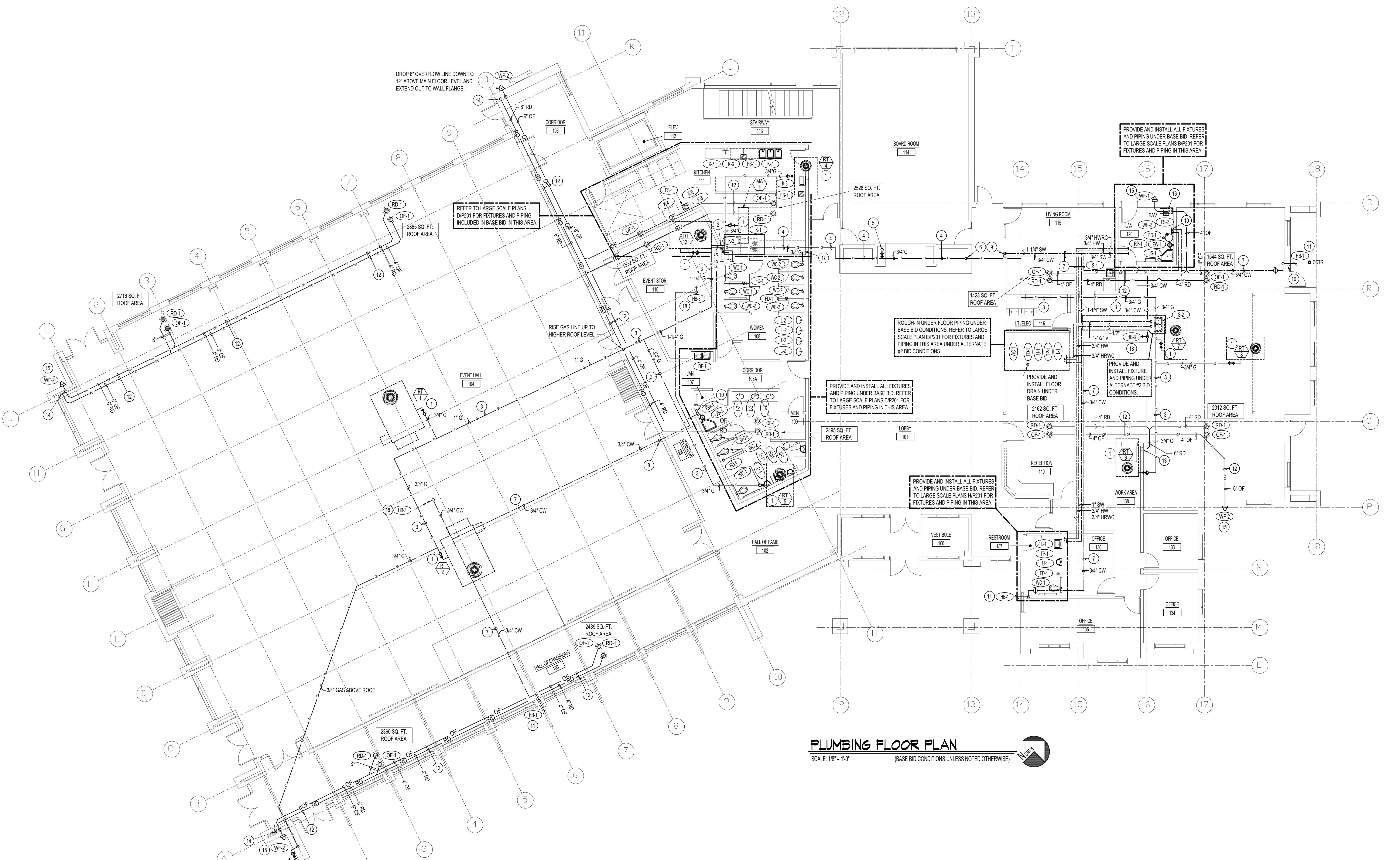
**BLUEPRINT BUILDING SAFETY**

BLD2009-00083

**REVIEWED FOR CODE COMPLIANCE**

This approval shall not be construed to be an approval of any violation of, or variance from, Idaho's adopted codes, standards, laws or rules applicable to this project.

**SEPARATE BUILDING PERMIT REQUIRED FOR CONSTRUCTION**



**PLUMBING FLOOR PLAN**  
 SCALE: 1/8" = 1'-0"  
 (BASE BID CONDITIONS UNLESS NOTED OTHERWISE)

DROP 3/4" (2 psi) GAS LINE DOWN IN EXTERIOR WALL SYSTEM TO 48" ABOVE FINISHED GRADE. EXTEND PIPING OUT AND PROVIDE SHUT-OFF VALVE AND PRESSURE REGULATOR IN LINE. PROVIDE EMERGENCY SHUT-OFF VALVE (MUSHROOM PUSH-BUTTON) GAS VALVE AND 600 MINIMUM TIMER IN LOCKED BOX IN WALL. REFER TO ARCHITECTURAL DRAWINGS FOR LOCKED BOX LOCATION. DROP 1-1/4" LOW PRESSURE LINE DOWN BELOW GRADE AND RUN TO FIT AS SHOWN.

ROUGH IN AND CONNECT 3/4" (LOW PRESSURE) GAS LINE TO FIRE PIT BURNER AS RECOMMENDED BY MANUFACTURE. FIRE PIT BURNER (350,000 BTU) FURNISHED AND INSTALLED BY GENERAL CONTRACTOR. REFER TO SITE PLAN FOR EXACT LOCATION OF FIRE PIT.